

# AP Network Configuration

## Connect to the People Counter's Hotspot

1. Power on your People Counter.
2. On your phone, open your Wi-Fi settings and connect to the network named: **MSR01-XXXXXX** (the last six digits should match the last six digits of your People Counter's MAC address, printed on the back of the device)

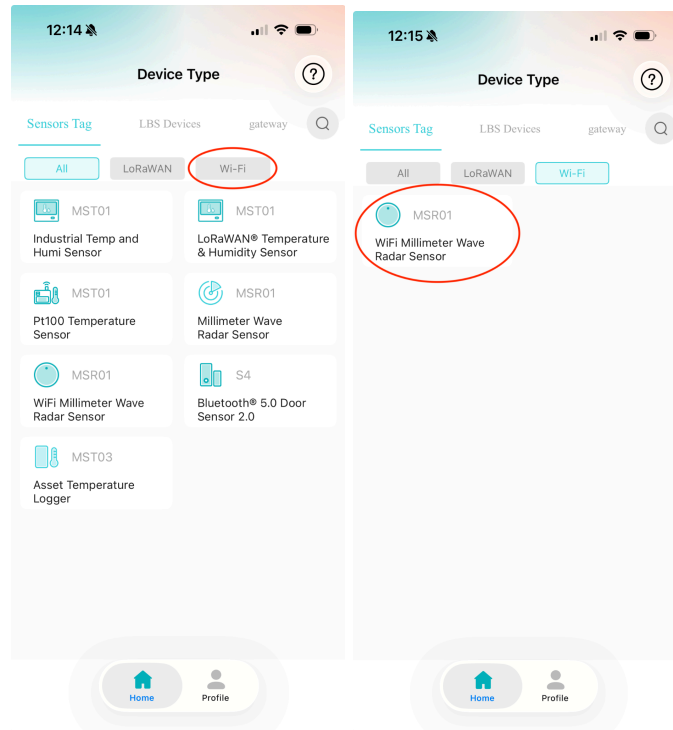


**Note:** If the People Counter's WiFi hotspot is not visible on your phone as an available network to connect to, unplug the People Counter, wait 30 seconds, and then plug it back in.

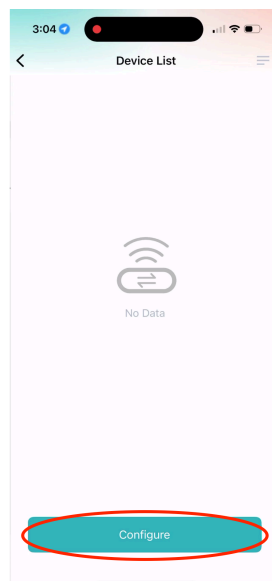
3. When prompted for a password, enter: **minew123**
4. Wait until your phone confirms it's connected to the AP hotspot.

## Navigate to AP Configuration in the MinewLink App

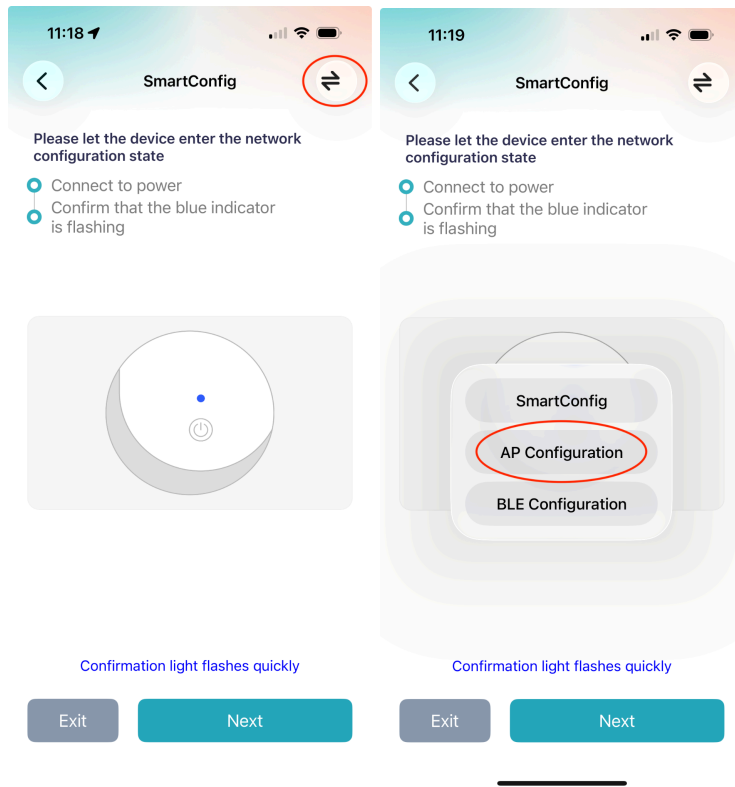
1. Launch the **MinewLink** app on your phone.
2. Select **Wi-Fi** → **Wi-Fi Millimeter Wave Radar Sensor**.



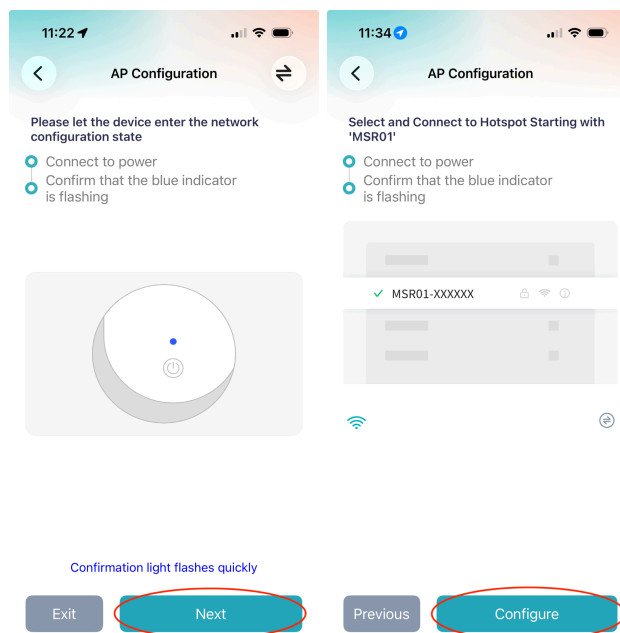
3. Select **Configure**.



4. Select the **menu icon** in the top right corner. Then, select **AP Configuration**.

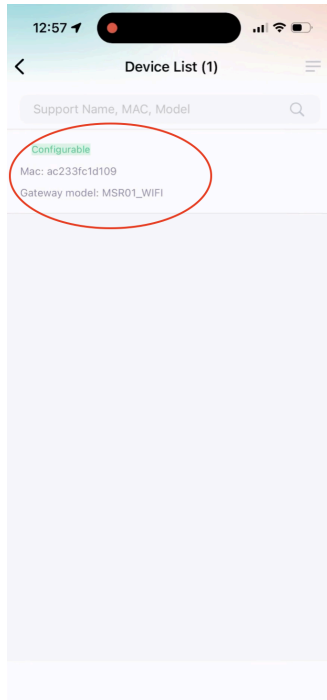


5. Tap **Next**, then **Configure**.

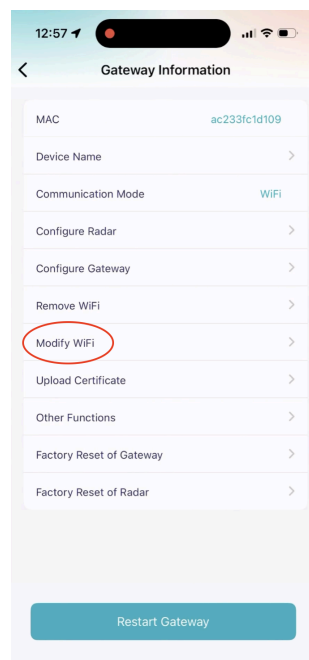


## Connect the Sensor to Your Network

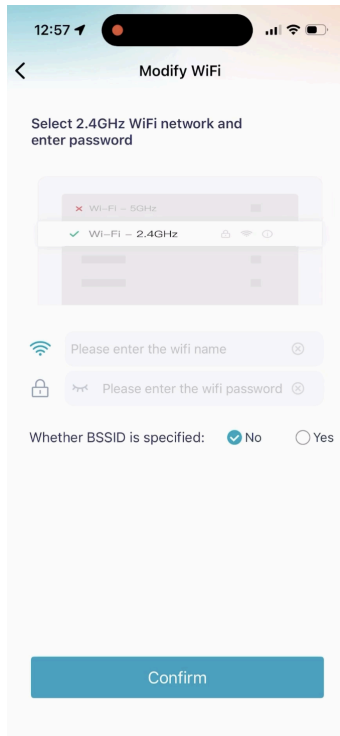
1. Select the People Counter you just added to your device list.



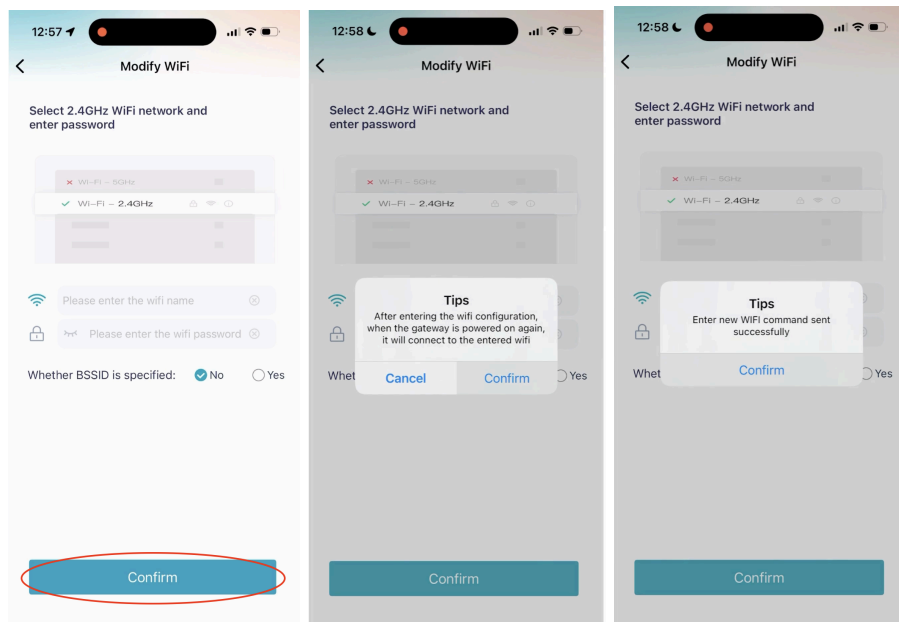
2. Select **Modify Wi-Fi**.



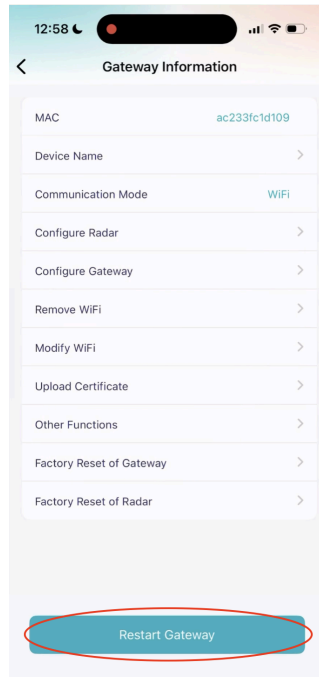
3. Enter the name and password of the Wi-Fi Network you want to connect your People Counter to **name (SSID)** and **password**.



4. Tap **Confirm** → **Confirm** → **Confirm**.



5. Select **Restart Gateway**, and then select **Confirm** twice more.



Once connected, the **LED light on your People Counter will turn solid green** for about 60 seconds before turning off.

## Verify Connection

1. Close the MinewLink app.
2. Reconnect your phone to the **same Wi-Fi network** you just connected to the People Counter.
3. Reopen the **MinewLink** app and return to the **Device List** page.
  - If your People Counter doesn't appear, tap the **menu icon** (top right corner) → **Discover Device** → **Confirm**.
  - Wait a few moments for your People Counter to appear, then tap **Confirm**.